

IRONTECH

Industrial Computers

TouchScreen for Display & Panel-PC

User Manual

for Linux

Version: 1.0.2

CONTENT:

CHAPTER 1. TOUCH PANEL CONTROLLER..... 2

1.1 CONTROLLER 2

1.2 SPECIFICATIONS AND FEATURES 3

CHAPTER 2. INSTALLING TOUCHKIT 5

CHAPTER 3. CONFIGURATION UTILITY AND RIGHT BUTTON EMULATOR.... 12

CHAPTER 4. UNINSTALLING TOUCHKIT..... 17

Chapter 1. Touch Panel Controller

This touch panel controller provides the optimistic performance of analog resistive touch panels for 4 wire, 5 wire and 8 wire models. It communicates with PC system directly through RS232, PS/2 or USB connector. Users can see how superior the design is in sensitivity, accuracy and friendly operation. The touch panel driver emulates mouse left and right button function and supports operation systems including Microsoft Windows 95 / 98 / ME / NT4 / 2000 / XP / XP Tablet PC Edition, Windows CE 2.12 / 3.0 / .NET, Linux, iMac and DOS.

1.1 Controller

Interface	RS232	USB	PS/2
4-wire	Ready	Ready	Ready
5-wire	Ready	Ready	Ready
8-wire	Ready	Ready	Ready
Capacitive	Ready	Ready	X

Table 1. Controllers match with different interfaces

1.2 Specifications and Features

Specifications	
Power requirements	+5VDC (Maximum 100mA, typical 70mA, 50mV peak to peak maximum ripple)
Operating temperature	0 to 50 °C
Storage Temperature	-40 to 80 °C
Relative Humidity	95% at 60 °C
Protocol	RS232 Model: 9600 bauds, None parity, 8 data bits and 1 stop bit USB Model: USB 1.1 Low speed PS/2 Model: PS/2 mouse
Resolution	2048 X 2048
Report rate	RS232 Model: Max. 160 points/sec USB Model: Max. 160 points/sec PS/2 Model: Max. 140 points/sec
Response time	Resistive: Max. 35 ms Capacitive: Max. 20 ms
Pin out definition	4 wire model: X+, Y+, X-, Y- 5 wire model: UL, UR, COM, LR, LL 8 wire model: X+, X+ref, Y+, Y+ref, X-, X-ref, Y-, Y-ref
Panel resistance	4, 8 wire resistive model: 200 ~ 900 ohm (pin to pin on the same layer) 5 wire resistive model: 50 ~ 200 ohm (pin to pin on drive layer)
Regulatory Approvals	FCC-B, CE

Table 2. Specifications for **TouchKit** controller

Features	
Calibration	Fast full oriental 4 points position
Compensation	Accuracy 25 points linearity compensation.
Draw Test	Position and linearity verification
Language	Support 10 languages for Windows
Advanced Feature	<ol style="list-style-type: none"> 1. Support monitor / display rotation 2. Support multiple monitor / display 3. Support QVGA and Half-VGA function 4. Support edge compensation 5. Support constant touch
Controller Setting	<ol style="list-style-type: none"> 1. Support multiple controllers 2. Dynamical add / remove controllers 3. Change Controller interface without reboot.
Mouse Emulator	<ol style="list-style-type: none"> 1. Right / Left button emulation 2. Normal / Click on touch / Click on release mode 3. Auto right button
Sound Notification	<ol style="list-style-type: none"> 1. Sound option (No Sound / Touch Down / Lift Up) 2. Frequency adjustment 3. Duration adjustment
Double Click	<ol style="list-style-type: none"> 1. Configurable double click speed 2. Configurable double click area
OS support	<ol style="list-style-type: none"> 1. Windows 95 / 98 / ME / NT4 / 2000 / XP / Windows XP Tablet PC Edition 2. Windows CE 2.12 / 3.0 / .NET 3. Linux (RedHat / Fedora / Mandrake / Suse / YellowDog) 4. iMac. OS9.x / OSX 5. MS-DOS: Support display resolution: 320x200, 640x200, 640x350, 640x480, 800x600, 1024x768 and 1280x1024
COM port support	<ol style="list-style-type: none"> 1. Support COM 1 ~ COM 256 for Windows and Linux 2. Support COM 1 ~ COM 8 for DOS

Table 3. Features for **TouchKit** software

Chapter 2. Installing TouchKit

TouchKit is software, which contains drivers and two utilities of the touch panel controllers for RS232, PS/2 and USB on Linux operation system. The two utilities are as follows:

- **Configuration support**
The calibration and draw test of touch panel are done by this utility.
- **Right button support**
This is utility for emulating the right and left button of mouse through controlling touch panel. Users can toggle between right or left mouse buttons by this utility.

We provide two way to install the driver, one is automatic installation and the other is install manually.

Automatic Installation

Before install **TouchKit** for Linux, please make sure that (1) users have root privilege and that (2) X window system has been configured correctly.

TouchKit driver package was compressed with uuencode software, it needs uudecode to extract it. The uuencode/uudecode software was include in the package

sharutils-x.x.x-xx.xxxx.rpm

This package should be found in the Linux CD disc or in Touchkit driver CD disc.

Follow these steps to install **TouchKit** for Linux. (**For ex. InMandrake 9.x**)

1. Put the **TouchKit** CD to CD-ROM and mount it on Linux operation system.
e.g. with command: **mount /dev/cdrom /mnt/cdrom**
2. Change directory to **/mnt/cdrom/Linux/Mandrake9**
3. Launch the installation script file (**touchkit.setup.sh** or **touchkit.setupxxx.sh**)
with command “**sh [scrip file name]**”. For ex. “**sh touchkit.setup.sh**”
4. The script will extract the driver source files to the directory “**/tmp/touchkit**”, and start driver installation.

```
(*) Extract files from [touchkit.setup.sh] to [/tmp/touchkit]
(*) Start installer [/tmp/touchkit/setup]
```

```
=== TouchKit for Linux Installer ===
```

```
(Step 1) Check Packages Installed
```

```
[Common]
```

```
make                OK (make-3.79.1-5)
```

```
tcl                 OK (tcl-8.3.1-46)
```

```
tk                 OK (tk-8.3.1-46)
```

```
[Required for Full Mode]
```

```
gcc                OK (gcc-2.96-54)
```

```
glibc-devel        OK (glibc-devel-2.1.92-14)
```

```
XFree86-devel      OK (XFree86-devel-4.0.1-1)
```

```
kernel-source      OK (kernel-source-2.2.16-22)
```

The installation script will check if software packages needed installed or not. If the needed software packages were not installed, the script file may stop driver installation.

5. The setup script will prompt user to select [1] Compact installation or [2] Full mode installation after it finishes checking the needed software packages. Choose **[1]** or **[2]** to precede installation procedure.

```
(Step 2) Select Installation Mode
```

```
(Q) Which installation mode do you prefer?
```

```
(1) Compact Mode, (only RS232 and PS/2) or
```

```
(2) Full Mode (RS232, PS/2 and [USB])
```

6. If [2] Full Mode is selected, the setup script will rebuild the driver package automatically before it install the driver.

```

1
(I) [Full Mode] selected

(Step 3) Rebuild TouchKit
for n in include driver utility xf86drv diag usb; do      \
    make -C $n || exit 1;          \
done
.
.
.
: '+-----+'
: '| Build-All Complete Successfully |'
: '+-----+'

```

7. After rebuild the driver package successfully if [2] Full Mode selected, **TouchKit** driver component will be installed into system. Then, it prompt user to restart X window to enable driver.

```

(Step 4) Install TouchKit
(*) Install USB module [/lib/modules/2.2.16-22/usb/tkusb.o]
(*) Install touch panel daemon [/usr/bin/tpanel.d]
(*) Install configuration utility [/usr/bin/touchcfg]
(*) Install XFree86 driver [/usr/X11R6/lib/modules/input/touchkit_drv]
(*) Generate uninstall script [/usr/bin/uninstall_TouchKit]
(*) Update system starting up script [/etc/rc.d/rc.local]
(*) Update XFree86 configuration [/etc/X11/XF86Config-4]
+-----+
| Installation Complete Successfully |
+-----+
(I) Start TouchKit touch panel daemon
(I) Start USB module

(I) Please RESTART your X Window Server.

```

8. To install driver for **RedHat 8.0** or **RedHat 9.0**, please repeat the step 1 ~ 7 as the same as other version of Linux. The difference between Redhat 8.0, 9.0 and other version is the install directory changed to **/mnt/cdrom/Linux/RedHat8** or **/mnt/cdrom/Linux/RedHat9**.

Execute script **touchkit.setupr8nm.sh** or **touchkit.setupr9.sh** with command **sh touchkit.setupr8nm.sh** or **sh touchkit.setupr9.sh**.

This software package should be installed first, since they are not for default installation when installing OS.

- **sharutils-4.2.1-12.i386.rpm**

Notice:

Please refer to above method to install other distributions Linux driver.

Manual Installation

For those Linux distribution that does not support RPM, the **TouchKit** driver can be installed manually. Users can extract the driver source code firstly. Unzip “**touchkit.tgz**” to a temp working folder.

Then, copy the driver files to the specific directory and configure the setting for X window.

1. Locate the system X window configuration file in **/etc/X11**. The setting file name maybe “**XF86Config**”(for most X 3.x), “**XF86Config-4**”(for most X4.x) , or “**Xorg.conf**”(for most Xorg 6.x), etc. Please make sure which file is used for X window configuration before adding setting configuration for **TouchKit**.
2. Add setting script to the X window configuration file. Edit the configuration file with any editor and add the script as below.

2.1) For X window 3.x:

Add a section as below in the X window configuration file

```
## TouchKit section begin (Please do NOT edit this section!!) ##
Section "Module"
Load "xf86TouchKit.so"
EndSection
Section "Xinput"
SubSection "touchkitpanel"
Port "/dev/tkdat0"
DeviceName "tpanel"
AlwaysCore
DebugLevel 0
EndSubSection
EndSection
## TouchKit section end ##
```

2.2) For X window 4.x and Xorg 6.x:

Add the below script in the Section "ServerLayout"

InputDevice "TKPANEL" "SendCoreEvents"

Then, add a new section for **TouchKit**

```
## TouchKit section begin ( Please do NOT edit this section!! ) ##
```

```
Section "InputDevice"
```

```
Identifier "TKPANEL"
```

```
Driver "touchkit"
```

```
Option "Device" "/dev/tkdat0"
```

```
Option "DebugLevel" "0"
```

```
EndSection
```

```
## TouchKit section end ##
```

3. Copy daemon to the target directory and change its mode.

```
cp tpaneld /usr/bin
```

```
chmod 4755 /usr/bin/tpaneld
```

4. Copy X module to the target directory.

4.1) for X window 3.x:

```
cp xf86TouchKit.so /usr/X11R6/lib/modules/input
```

4.2) for X Window 4.x or Xorg 6.x:

```
cp touchkit_drv.o /usr/X11R6/lib/modules/input
```

5. Edit the daemon configuration file **"/etc/tpaneld.conf"**. If this file was not exist, create a new file with the file name **"tpaneld.conf"**. The configuration should contains some parameters description as below

```
MouseMode = DRAWING
```

```
DbIClickSpeed = 18
```

```
DbIClickArea = 30
```

```
RclickTool = 0
```

Sound = 0

Port = /dev/ttyS0

Port = /dev/ttyS1

Port = /dev/psaux

Port = /dev/usb/tkpanel0

Port = /dev/usb/tkpanel1

The daemon tpaneld will scan the ports list in the configuration file to check if touchscreen controller exist or not. **/dev/usb/tkpanel0** and **/dev/usb/tkpanel1** are used for USB model only.

6. Copy the calibration files. The calibration files should be found in the subdirectory of **touchkit/diag** after the driver packages was extracted.
/touchkit/diag/4pcal/4pcal is the 4 points calibration utility.
/touchkit/diag/25pcal/25pcal is the 25 points calibration utility.
/touchkit/diag/drawtest is the utility for draw testing.
Users can do calibration or draw test with these utility.
For ex. **/touchkit/diag/4pcal/4pcal /dev/ttyS0** for 4 points calibration with the device on **/dev/ttyS0**.
7. Rebuild the kernel module for USB. This is needed for USB model. Follow below steps to rebuild the kernel module “**tkusb.o**” (for kernel before 2.4.x) or “**tkusb.ko**”(for kernel 2.6.x).
 - 7.1) Locate the extracted directory. And go to the subdirectory **/touchkit/include**
make new
 - 7.2) change the directory to **/touchkit/usb**
make all
then the kernel module will be rebuild. (**The kernel source must be installed and well configured**).
 - 7.3) Copy the kernel module “**tkusb.o**”(kernel version before 2.4.x) or “**tkusb.ko**”(kernel version 2.6.x) to the target directory.
For example, “**/usr/bin**”
 - 7.4) Copy the user daemon **usbnpd** to the target directory.
For example, **cp usbnpd /usr/bin**

7.5) edit USB daemon file **/etc/usbnpd.conf**. If the file was not exist, create new one. The **/etc/usbnpd.conf** should contains the description as

```
Device = 0x0123, 0x0001, insmod tkusb vidlist=" 0123 3823 3823 0EEF 0EEF" pidlist=" 0001 0001 0002 0001 0002"; /usr/bin/tpaneld &
Device = 0x3823, 0x0001, insmod tkusb vidlist=" 0123 3823 3823 0EEF 0EEF" pidlist=" 0001 0001 0002 0001 0002"; /usr/bin/tpaneld &
Device = 0x3823, 0x0002, insmod tkusb vidlist=" 0123 3823 3823 0EEF 0EEF" pidlist=" 0001 0001 0002 0001 0002"; /usr/bin/tpaneld &
Device = 0x0EEF, 0x0001, insmod tkusb vidlist=" 0123 3823 3823 0EEF 0EEF" pidlist=" 0001 0001 0002 0001 0002"; /usr/bin/tpaneld &
Device = 0x0EEF, 0x0002, insmod tkusb vidlist=" 0123 3823 3823 0EEF 0EEF" pidlist=" 0001 0001 0002 0001 0002"; /usr/bin/tpaneld &
```

8. Make device node for USB model. Make device node to represent the USB **TouchKit** controller device.

```
mknod /dev/usb/tkpanel0 c 180 180
```

```
mknod /dev/usb/tkpanel1 c 180 181
```

9. Modify **rc.local** to load kernel module and daemon. The "**rc.local**" file should be found in "**/etc/rc.d**". Append the following description in this file.

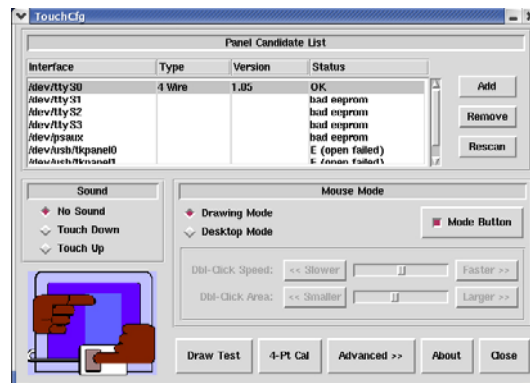
```
## TouchKit section begin ( Please do NOT edit this section!! ) ##
    insmod /usr/bin/tkusb.o ## for USB model only. kernel before 2.4.x only
    insmod /usr/bin/tkusb.ko ## for USB model only. Kernel 2.6.x only
    /usr/bin/usbnpd
    /usr/bin/tpaneld
## TouchKit section end #
```

10. Reboot

Chapter 3. Configuration Utility and Right Button Emulator

The touch-sensitive area of the panel and touch-sensitivity both can be modulated through the configuration utility. Besides, the controller identification and device activated shall be done first.

After installation **TouchKit**, execute **touchcfg** to start the configuration utility.



The **Panel Candidate List**, which contains by default two RS232, one PS/2 and two USB devices, commands **TouchKit** driver which port to probe for controller. If a port is occupied by other device, e.g. **/dev/ttyS0(COM1)** is used by a mouse, it is recommended to **Remove /dev/ttyS0** from the list, since the probe process would interfere the operation of mouse.

If the users need other com port, for example com3, please go to **/etc/tpaneld.conf** and add the sentence **Port = /dev/ttyS2**.

< tpaneld.conf >

MouseMode = DRAWING

DblClickSpeed = 18

DblClickArea = 30

RClickTool = 0

Sound = 0

Port = /dev/ttyS0

Port = /dev/ttyS1

Port = /dev/psaux

Port = /dev/ttyS2 is added to use com3
Port = /dev/ttyS3 is added to use com4

Port = /dev/usb/tkpanel0

Port = /dev/usb/tkpanel1

After checking that touch panel devices (included its controller) are equipped well, users may click **[Rescan]** button to scan all devices listed. If there are any additional connections excluding default connections, please press **[Add]** button to set specific settings.

Select one device after import more than one device at the panel list window.

The one selected will activate the panel.

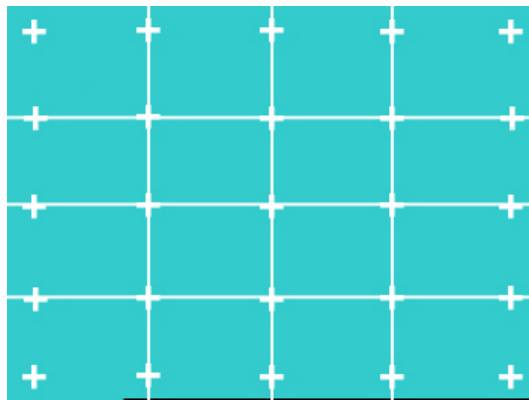
The Sound option provides users the click feedback while the click actions are done.

There are five buttons, **[Draw Test]**, **[4-PT Cal]**, **[Advanced]**, **[About]** and **[Close]**, at the lower section of the **TouchCfg** window.

<DRAW TEST>

Test the drawing position related to the display screen on panel.

Click on the **[Draw Test]** button. There will be a squared blue display showing.

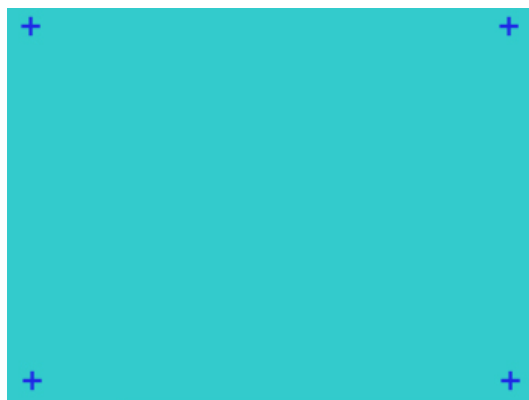


Try to write or draw on it to verify the touch position.

Press **<ESC>** to exit.

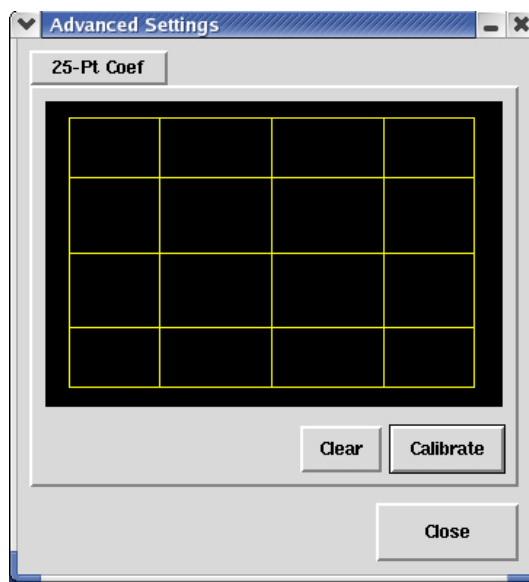
<4-PT Cal>

Correct 4 point locations on screen with the panel. Press **[4-PT Cal]**, screen displays as follows.



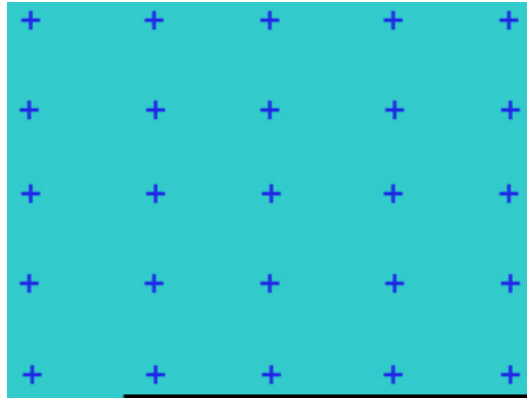
Touch the blinking symbol on panel until beep or stop blinking.

<Advanced>



Press **[Clear]** to clear the previous calibration records.
The record will become default record.

Press **[Calibrate]** to execute 25 points calibration.
Correct 25 point locations on screen with the panel.



Touch the blinking symbol on panel until beep or stop blinking.

There will be a message window after this correction. After the calibration, the new record will overwrite the old one.

<Mode Button>

Check it or not to turn mouse button, which provides mode selection and right button emulation, on or off.



Change **right / left** button by click the button shown on the right-bottom corner of screen. Blue area expresses what button has been selected.

After select the button, users can touch the panel to control mouse activities. Select / De-select files or Drag icons on screen, whatever the mouse behaves.

<Double Click Speed>

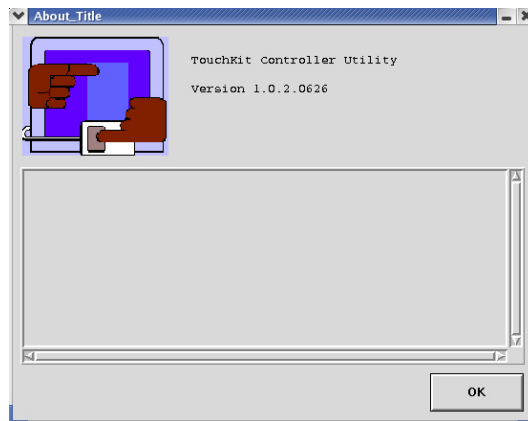
Double Click Speed is the time of the touch panel response when someone double click it. Drag the cursor from left to right is slow to fast.

<Double Click Area>

Each one touch has its own touch tolerance once someone may not fix in one point. So if users set the Double Click Area to **<Smaller>**, the panel will be very sensitive about micro-move while users want to fix on a point. If users set it to **<Larger>**, it tolerates the larger touch point movement while users want to point at a fixed position.

<About>

Information about **TouchKit**.



<Close>

Close **TouchKit** touch panel utility.

Chapter 4. Uninstalling TouchKit

To uninstall **TouchKit** all users have to do is execute **uninstall_TouchKit** in **text mode**.